



**National Family Caregiver Month Statewide Toolkit**  
**Monday, November 07 - Sunday, November 12**

**Relative & Grandparent Caregivers**

Monday,  
Nov 07

[Link](#) to the image  
provided

All links can be  
saved as a png  
and used on  
social media and  
in newsletters

**Video Resource to Share:** Relative As Parents: [\(53\) Kinship Brings Change - YouTube](#)



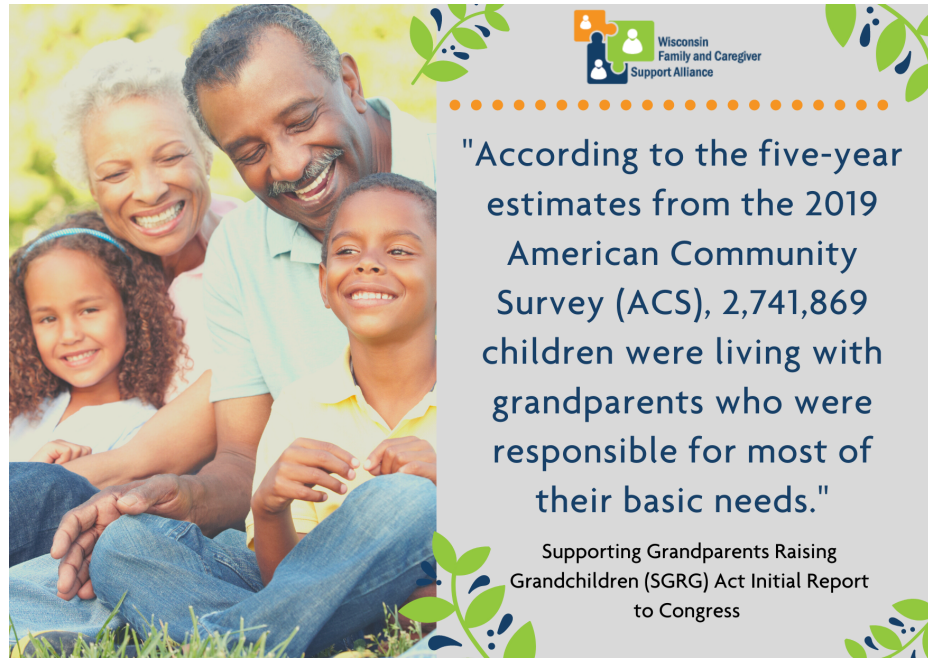
[Can 'Kinship Care' Help the Child Welfare System? The White House Wants to Try. - The New York Times \(nytimes.com\)](#)

For questions regarding the National Family Caregiver Month Statewide Toolkit, contact:  
Bryn Ceman | GWAar | [Bryn.Ceman@gwaar.org](mailto:Bryn.Ceman@gwaar.org)  
Rachel Watkins-Petersen | RCAW | [rwatkins-petersen@respitcarewi.org](mailto:rwatkins-petersen@respitcarewi.org)

Tuesday,  
Nov 08

[Link](#) to the image  
provided

All links can be  
saved as a png  
and used on  
social media and  
in newsletters



Wednesday,  
Nov 09

[Link](#) to the image  
provided

All links can be  
saved as a png  
and used on  
social media and  
in newsletters

**Resource to share:** [Kinship Navigator](#) | [Wisconsin Department of Children and Families](#)



- Respite care provides short-term relief for family caregivers.
- Apply for a respite grant, and hire a friend, family member, neighbor, or your provider of choice.
- RCAW serves all 72 counties and 11 federally recognized tribes.
- FREE training opportunities for family caregivers and respite care providers.
- Find a respite provider on the Wisconsin Respite Care Registry.



[info@respitcarewi.org](mailto:info@respitcarewi.org)  
[www. respitcarewi.org](http://www.respitcarewi.org)  
608-222-2033

For questions regarding the National Family Caregiver Month Statewide Toolkit, contact:

Bryn Ceman | GWAar | [Bryn.Ceman@gwaar.org](mailto:Bryn.Ceman@gwaar.org)

Rachel Watkins-Petersen | RCAW | [rwatkins-petersen@respitcarewi.org](mailto:rwatkins-petersen@respitcarewi.org)



Friday,  
Nov 11

[Link](#) to the image  
provided

All links can be  
saved as a png  
and used on  
social media and  
in newsletters



## National Family Caregiver Month



### Support & Resources for Grandparents Raising Grandchildren

- **Kinship Navigator Portal** - Helps find the right resources to help with medical care, support payments, and more. [dcf.wisconsin.gov/kinship/navigator](http://dcf.wisconsin.gov/kinship/navigator)
- **The Coalition of Children, Youth, and Families** - Tools and resources to help foster and adoptive families create a network of support through webinars, newsletters, informational tip sheets, free lending library, and more. [coalitionforccyf.org](http://coalitionforccyf.org)
- **Wisconsin Foster Care and Adoption Resource Center** - Resources and support to help grandparents and other relatives who are raising their relatives' children. [wifostercareandadoption.org](http://wifostercareandadoption.org)
- **Wisconsin Adoption & Permanency Support Program** - Resources for adoptive and other families such as a support group and mental health professionals' directory, toll-free telephone support, newsletter, educational opportunities, etc. [wisapsp.org](http://wisapsp.org)
- **Wisconsin Shares** - Child Care Subsidy Program helps eligible families pay for childcare. [dcf.wisconsin.gov/wishares](http://dcf.wisconsin.gov/wishares)
- **Grandparenting Today** - Publications and fact sheets about the changing roles of grandparents, child development, child rearing, discipline, education, nutrition, and other pertinent topics for grandparents raising children. [grandkidsmatter.org](http://grandkidsmatter.org)
- **Generations United** - An organization that works to support grandfamilies and intergenerational communities through public policies, collaborations, and programs. [www.gu.org](http://www.gu.org)
- **Wisconsin Kinship Care** - State site devoted to the Kinship Care program that supports grandparents and other relative caregivers. [dcf.wisconsin.gov/kinship](http://dcf.wisconsin.gov/kinship)

Saturday,  
Nov 12

[Link](#) to the image  
provided

All links can be

**Resource to share:** [GrandFacts: Data, Interpretation, and Implications for Caregivers](#)

For questions regarding the National Family Caregiver Month Statewide Toolkit, contact:

Bryn Ceman | GWAar | [Bryn.Ceman@gwaar.org](mailto:Bryn.Ceman@gwaar.org)

Rachel Watkins-Petersen | RCAW | [rwatkins-petersen@respitcarewi.org](mailto:rwatkins-petersen@respitcarewi.org)



saved as a png  
and used on  
social media and  
in newsletters



## National Family Caregiver Month



Supporting Grandparents Raising Grandchildren

- **Connect with the Community** - Community-based programs can help decrease isolation, disconnectedness, and burnout.
- **Educate** - Developmental norms, appropriate discipline, uses and boundaries while using technology require education for many Grandparents raising Grandchildren.
- **Offer Respite** - Breaks for Grandparents could look like time for exercise, medical appointments, meditation, housekeeping, or errand running.

Connect with a Kinship Coordinator for local resources.

Sunday,  
Nov 12

[Family Caregiver Survey](#) or by scanning



Siblings' Choice Award

For questions regarding the National Family Caregiver Month Statewide Toolkit, contact:  
Bryn Ceman | GWAar | [Bryn.Ceman@gwaar.org](mailto:Bryn.Ceman@gwaar.org)  
Rachel Watkins-Petersen | RCAW | [rwatkins-petersen@respitewarewi.org](mailto:rwatkins-petersen@respitewarewi.org)