

2025 Wisconsin Respite Summit

SEPTEMBER 16, 2025



**LISTENING TO CAREGIVERS:
DATA AND STORIES DRIVING SUPPORTIVE CHANGE**

WELCOME!



**THE MADISON CONCOURSE HOTEL
MADISON, WI**



9:00 am Welcome & Opening Remarks

Lisa Schneider, RCAW Executive Director



RCAW

Respite Care Association
of Wisconsin

9:15 am RCAW Overview

Leslie Thede, Program Manager

Kelly Lamby, Program Support Specialist

Rachel Watkins-Petersen, Assistant Director

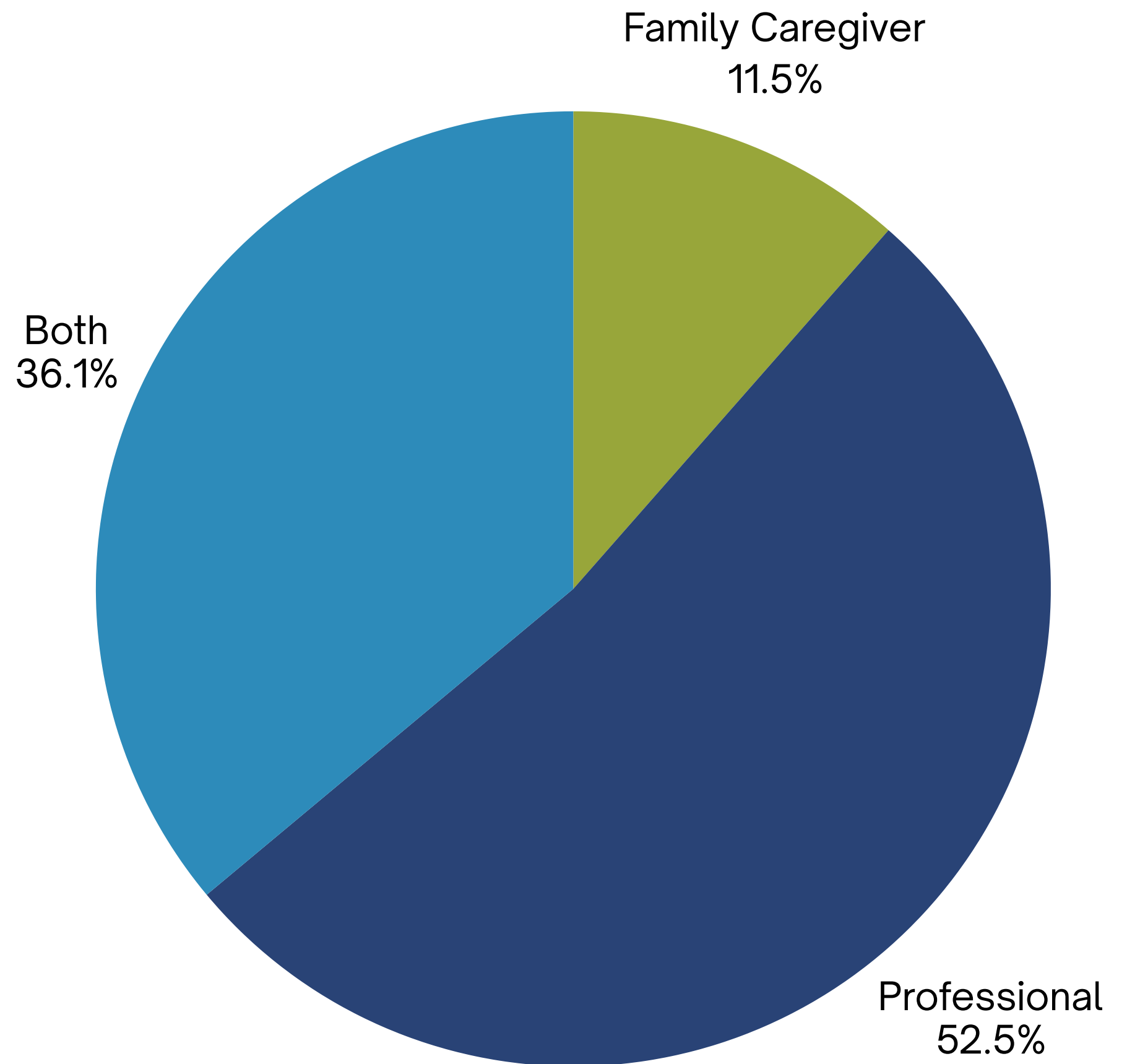


RCAW
Respite Care Association
of Wisconsin

Who is here today?



RCAW
Respite Care Association
of Wisconsin





RCAW
Respite Care Association
of Wisconsin

Grants to support Family Caregivers

- Caregiver Respite Grant Program
- Supplemental Respite Grant Program
- Emergency Respite Grant Program



Business Development for New or Expanding Agencies or Programs

- Bringing Respite To Your Community
- HCBS Worker-Owned Cooperative
- StartUP Respite Grant Program



Training for Respite Providers & Family Caregivers

- Respite Care Provider Training
- How To Hire A Respite Care Provide
- Continuing Education
- Other Specialty Training



Grants for Existing Respite Programs

- Respite Care Provider Grant



Resources, Education, and Engagement



Registry & Respite Connections

- Trained Respite Provider Registry
- Family Caregiver Job Posting



Making Respite Happen!

Caregiver Health Impact: Is Respite Important?

Physical Health Issues

- Fatigue & poor sleep, including insomnia.
- High blood pressure & heart disease risk
- Weakened immune system, frequent physical distress (e.g., headaches, back pain, stomach problems)
- Obesity, diabetes, asthma, COPD, and arthritis are more prevalent in caregivers than non-caregivers.
- Physical injury risk, poor nutrition, skipped health checks;
- **1 in 4 caregivers report fair/poor health**

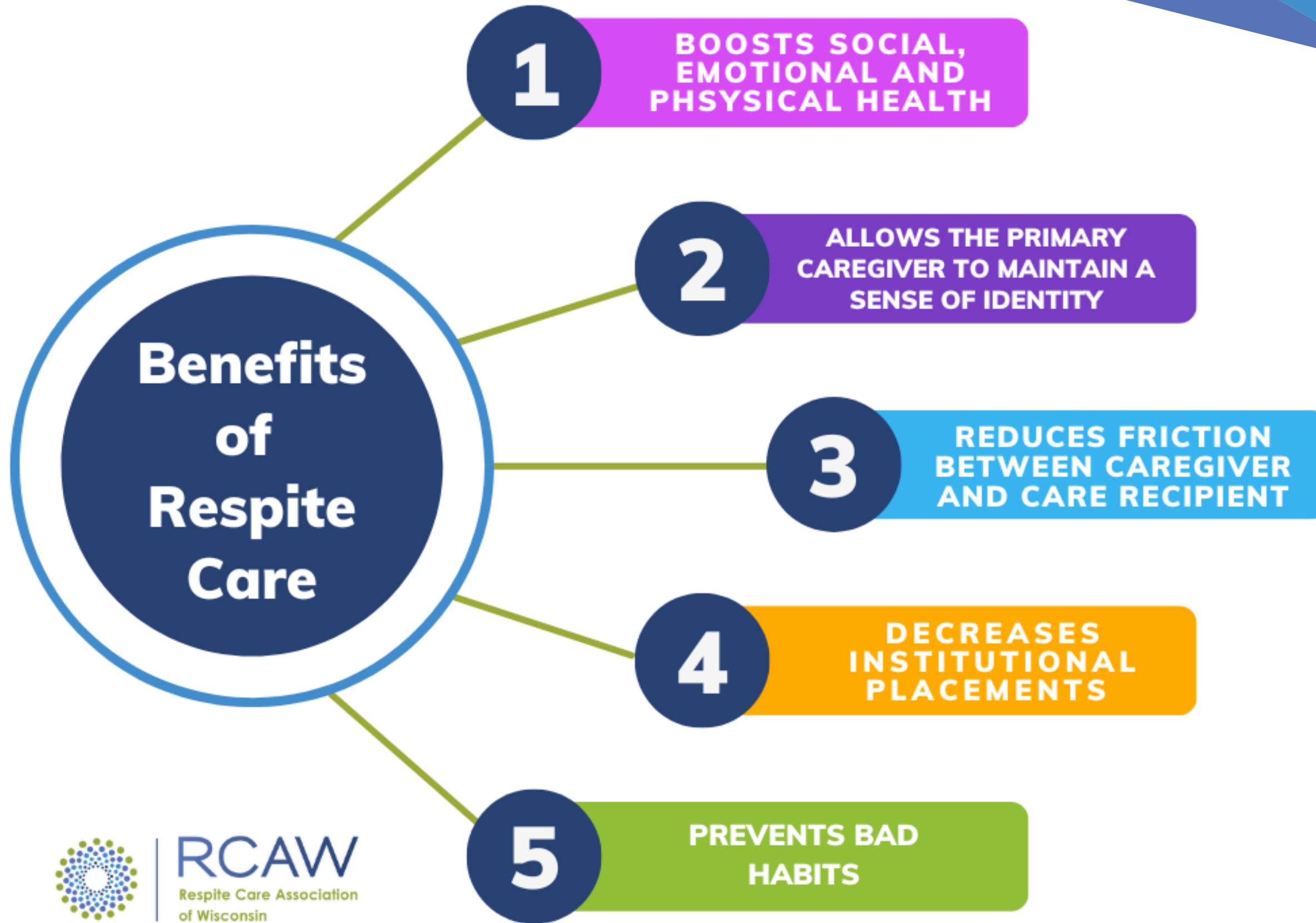


Caregiver Health Impact: Is Respite Important?



Mental & Emotional Health Issues

- Chronic stress, emotional exhaustion & burnout
- Anxiety & depression: caregivers were as likely to be depressed, 50% report increased emotional stress; 23% report “good” mental health
- Social isolation & loneliness (especially dementia caregivers)
- Cognitive and decision-making issues, mood swings, grief
- Increased mortality risk: up to 63% higher death risk under sustained strain



RCAW
Respite Care Association
of Wisconsin



RCAW
Respite Care Association
of Wisconsin



Grants for Family Caregivers

- Caregiver Respite Grant Program (CRGP)
- Supplemental Respite Grant Program (SRGP)
- Healthy Meals, Healthy Minds (HMHM) Grant Program



RCAW
Respite Care Association
of Wisconsin

 **Important** 

The Respite Care Association of Wisconsin (RCAW) administers grant programs using both state and federal funding to support family caregivers across all 72 counties and 11 federally recognized tribes in Wisconsin. Depending on available funding, eligible caregivers may be able to apply for all three grants simultaneously and reapply every 60–90 days. Because funding and eligibility timelines may change, RCAW posts the most current information at the top of each grant webpage. Caregivers are encouraged to check these pages regularly for updates on reapplication windows and other important details.

Grants for Family Caregivers

The **Caregiver Respite Grant Program** provides financial support for family caregivers for up to 5 days of respite care within 30 days of application approval. This grant allows approved applicants to hire the respite care provider of their choice for the care recipient. Applicants can reapply 60* days after last date of respite.

CAREGIVER RESPITE
GRANT PROGRAM



Eligibility Criteria

To be eligible for the grant, applicants (the primary or family caregiver) must have the applicable ADRC, Tribal ADRS, county case manager, etc., complete the Supporting Documentation Form showing the care recipient:

1. Has applied for a Long-term Care Waiver or other programs and not expecting to receive services or approval within thirty (30) days of the application.
2. Has been denied Long-Term Care Waiver support(s) or other programs that provide respite services.
3. Has been approved for Long-Term Care Waiver support(s) or other programs that provide respite services and has exhausted funds from the programs.
4. Has applied and is receiving other supports, and the applicant needs flexibility for services not covered by current funding supports.
5. Has not applied for a Long-Term Care Waiver support(s) because they are ineligible for other supports.

CRGP 4 Step Application Process

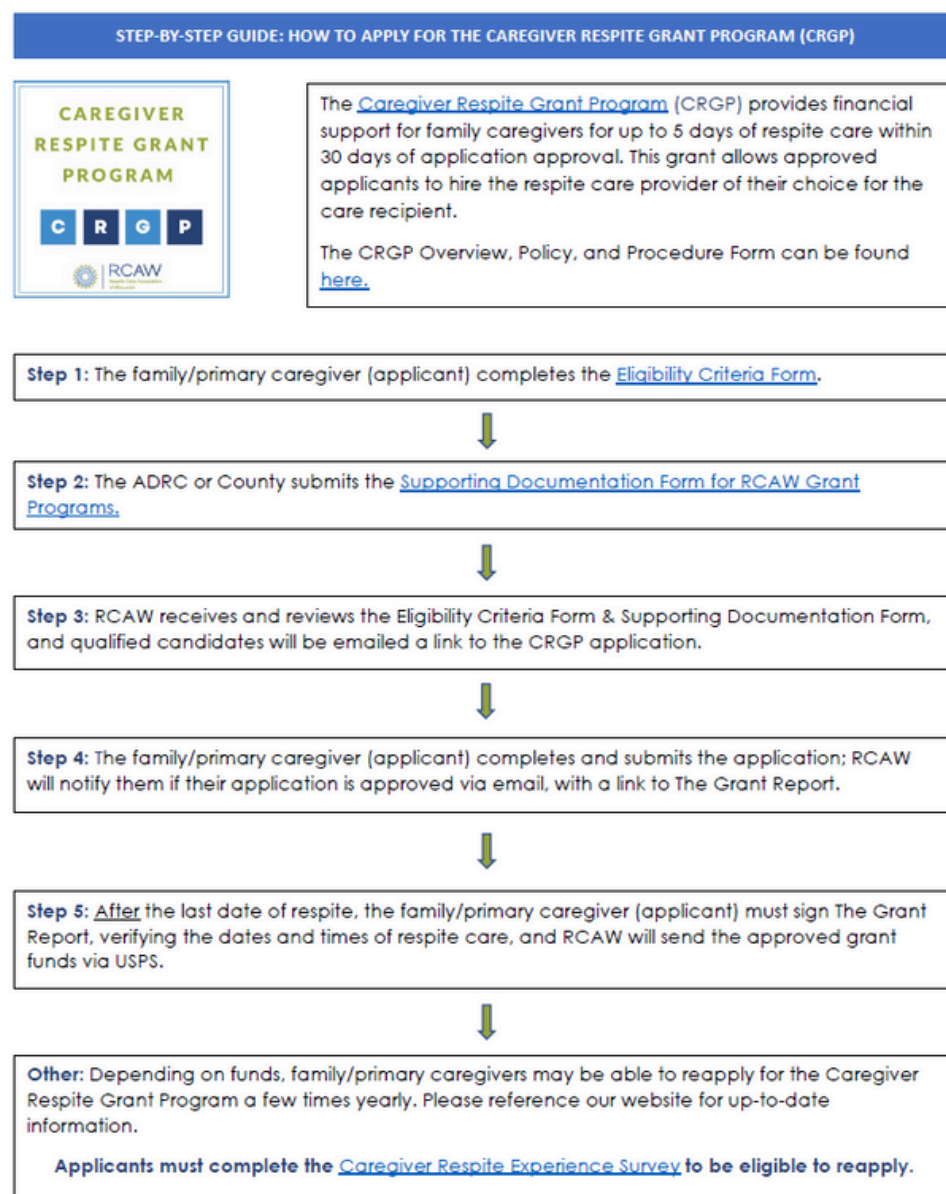
Step 1: The applicant completes the Eligibility Criteria Form (ECF), and the ADRC or County completes the Supporting Documentation Form (SDF).

Step 2: Once the ECF and SDF have been completed and submitted to RCAW, RCAW will email eligible applicants with a link to the grant application.

Step 3: Once RCAW receives the completed CRGP application, RCAW will notify the applicant if the application is approved via email with a link to the Grant Report that must be completed and submitted once respite services have been provided.

Step 4: Once RCAW receives the completed Grant Report, the payment for respite is sent, and the applicant receives a link to complete the CRGP Impact Survey. (Applicants can not reapply if they do not submit this survey.)

Ways we make it easy for consumers!



This form is a high-level overview of the CRGP. For more information on the program, visit the [webpage](#).

[STEP-BY-STEP GUIDE: HOW TO APPLY FOR THE CAREGIVER RESPITE GRANT PROGRAM \(CRGP\)](#)



[STEP-BY-STEP VIDEO: HOW TO APPLY FOR THE CAREGIVER RESPITE GRANT PROGRAM \(CRGP\)](#)





"I so appreciated being "seen" and having concrete support offered, whereas other times, it feels like I have to fight tooth and nail for even the small things that would actually make a difference for our crew. Thank you. It makes it less overwhelming to juggle all the things."

Last Grant Year Period



- 103 respite care grants awarded statewide
 - 52 grants awarded to underserved populations
 - 22 emergency respite grants awarded
- 7,402 hours of respite care received
- 100% of Impact Survey respondents answered YES to the question, “Did RCAW grant funds positively impact your emotional wellness?”

Live Preview:

[Supporting Documentation Form](#)

CLICK HERE



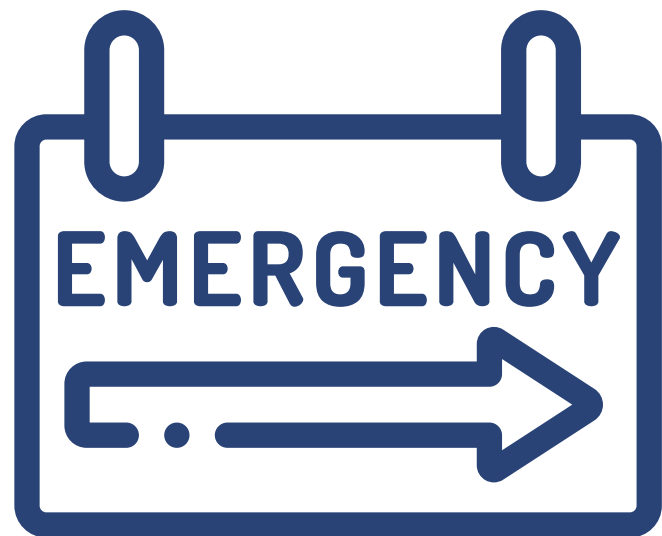
- The SDF is utilized for the Caregiver Respite and Supplemental Respite Grant Programs.
- The SDF verifies that other Long-Term Care (LTC) waivers and caregiver support programs cannot provide respite care services to the applicant, as this program is typically the payor of last resort.

CRGP SUPPORTS SELF-DIRECTION



- RCAW's CRGP has no maximum usable amount within a given period if it is in line with the care needs of the care recipient and market rate costs, whether the provider is an individual or facility provider.
- RCAW requires applicants to apply for respite that will occur in the next 30 days to manage better and spend funds promptly (unlike voucher programs).
- RCAW's CRGP allows the caregiver to determine the rate to pay a respite provider, maximizing their choice and control and adhering to the principles of self-direction. If an agency or facility provides care, that provider generally determines the rate.

EMERGENCY USE OF THE CRGP



Emergency Respite Care addresses the health and safety of the care recipient or the caregiver, thereby placing either at risk or in danger. Emergencies may include, but are not limited to, the following circumstances:

- Is the need to prevent abuse and neglect for the care recipient?
- Is there a need to prevent a mental health crisis for the caregiver or care recipient?
- Does the caregiver need medical attention in the immediate future?
- Does the caregiver have a medical emergency within their immediate family?
- Do they need emergency assistance to attend a funeral/wake/celebration of life?
- Has there been a loss of employment or a work-related situation?
- Drug or alcohol abuse counseling or support?

EMERGENCY USE OF THE CRGP CONTINUED

At RCAW's discretion at any point in the application process, **RCAW may request additional documentation** proving or supporting the urgency indicated. Additional documentation may include, but is not limited to, a note from a county employee, social worker, therapist, doctor, or employer or documentation of a funeral/wake/celebration of life.

An applicant/family caregiver is eligible for **one grant** for emergency respite care without Supporting Documentation Forms **within 365 days**.

**CAREGIVER
RESPITE**



**GRANT
PROGRAM**

Supplemental Respite Grant Program



The Supplemental Respite Grant Program supports primary caregivers by providing **\$250** for supplemental respite services. Applicants can reapply every 60* days. This grant allows you to hire the person or service of your choice.

[Supplemental Respite Grant Program](#)



This project is supported by the Administration for Community Living (ACL), U.S. Department of Health and Human Services (HHS) as part of a financial assistance award totaling \$490,000 with 75 percentage funded by ACL/HHS and \$142,933 and 25 percentage funded by non-government source(s). The contents are those of the author(s) and do not necessarily represent the official views of, nor an endorsement, by ACL/HHS, or the U.S. Government.

Allowable Expenses:

1. Qualified home modifications (does not include construction, painting, remodeling, or wear-and-tear upgrades):
 - Wheelchair ramps,
 - Grab bars,
 - Interior and exterior accessible intervention.
2. Assistive technology, emergency response systems, and home safety interventions (does not include new televisions, new washers/dryers, etc.),
3. Technology to decrease isolation and increase social engagement:
 - Tablets/Computers to communicate with friends, family, etc.
4. Housekeeping and laundry services.
5. Lawn mowing,
6. Snow removal,
7. Transportation,
 - Respite Activities or Medical Appointments.
8. Sensory Items

SRGP 4 Step Application Process

Step 1: The applicant completes the Eligibility Criteria Form (ECF), and the ADRC or County completes the Supporting Documentation Form (SDF).

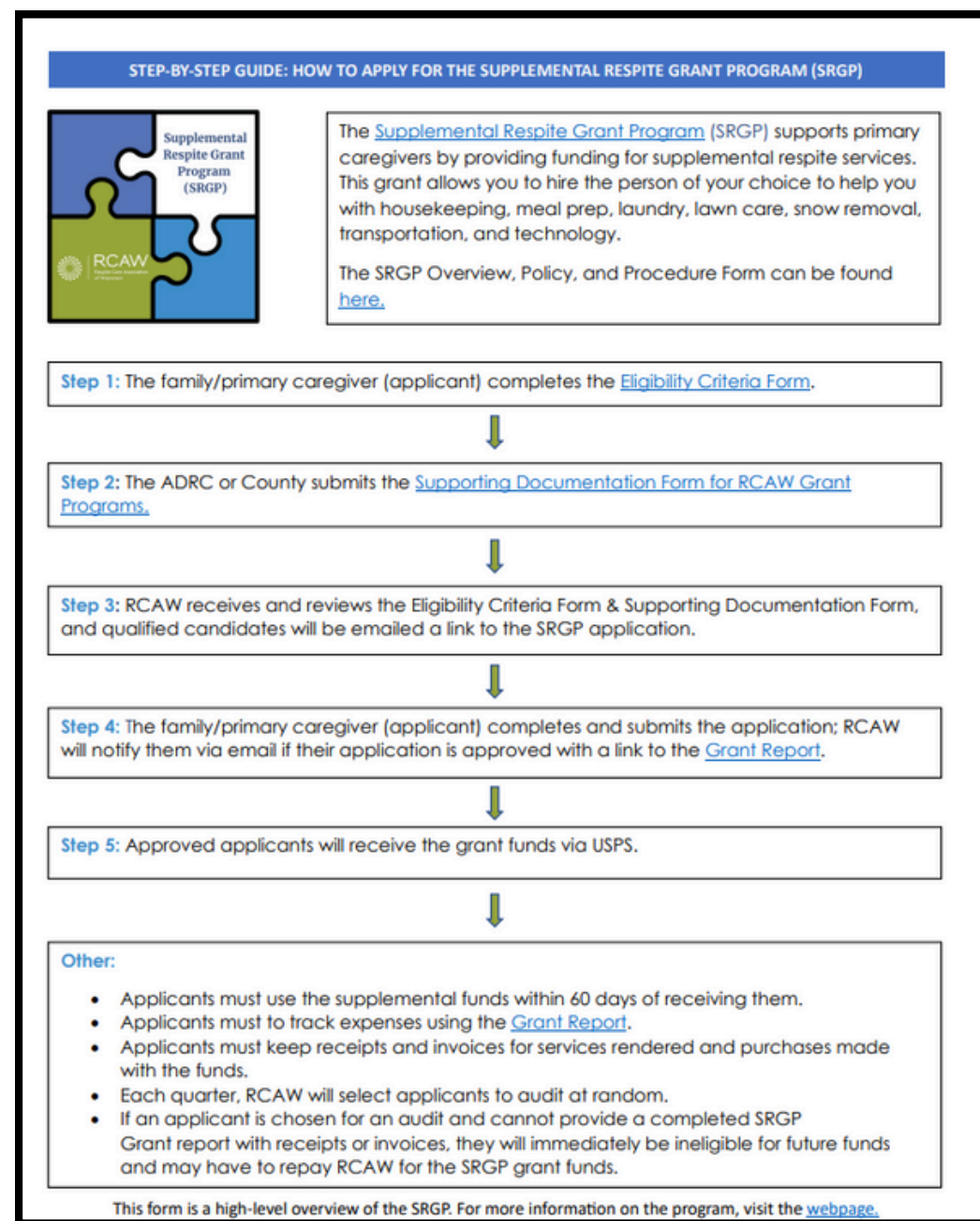


Step 2: Once the ECF and SDF have been completed and submitted to RCAW, RCAW will email eligible applicants with a link to the grant application.

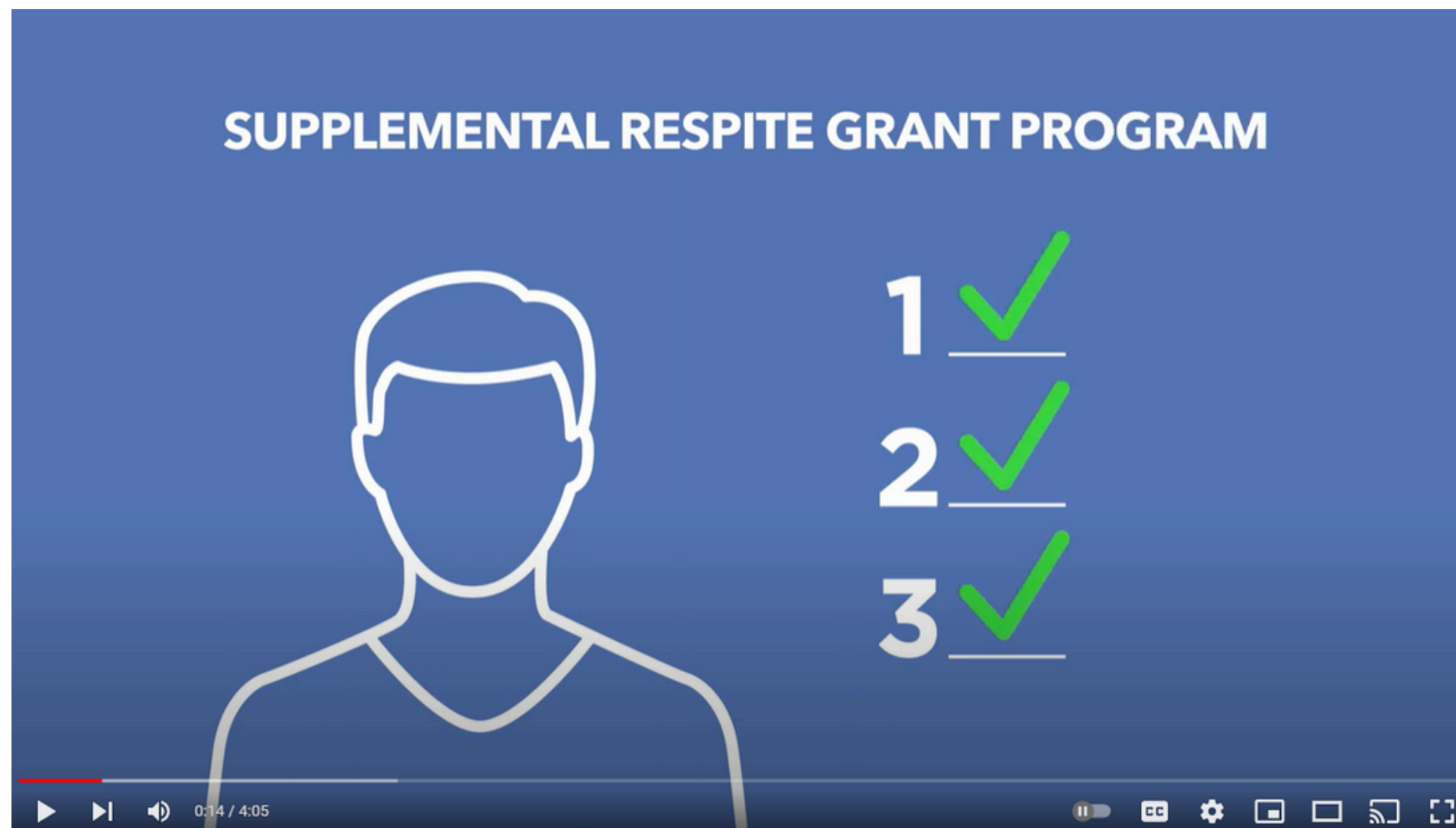
Step 3: Once RCAW receives the completed SRGP application, RCAW will notify the applicant if the application is approved via email with a link to the Grant Report and mail the awarded \$250 grant funds.

Step 4: The applicant must track expenses on the Grant Report and keep the documentation if RCAW audits their spending.

Ways we make it easy for consumers!



[STEP-BY-STEP GUIDE: HOW TO APPLY FOR THE SUPPLEMENTAL RESPITE GRANT PROGRAM \(SRGP\)](#)



[STEP-BY-STEP VIDEO: HOW TO APPLY FOR THE SUPPLEMENTAL RESPITE GRANT PROGRAM \(SRGP\)](#)



HEALTHY MEALS, HEALTHY MINDS GRANT



The Healthy Meals, Healthy Minds Grant strengthens services and supports for family caregivers by helping them access nutritious meal kits and invest in their mental health and wellness by funding supportive services.



This project is supported by the Administration for Community Living (ACL), U.S. Department of Health and Human Services (HHS) as part of a financial assistance award totaling \$490,000 with 75 percentage funded by ACL/HHS and \$142,933 and 25 percentage funded by non-government source(s). The contents are those of the author(s) and do not necessarily represent the official views of, nor an endorsement, by ACL/HHS, or the U.S. Government.

Allowable Expenses:



Nutritious Meals as Respite

- In-home prepared meals, • Delivered meal kits (i.e., Hello Fresh, Blue Apron, Orders Up)
- Does not include grocery shopping, fast food, or restaurant eating.

Mental Health and Wellness

- Mental health counseling (in-person or telehealth),
- Wellness classes such as yoga and meditation,
- Gym or community memberships, Self-help books,
- Weighted blankets,
- Light therapy, and
- Virtual subscriptions.

HMHM 4 Step Application Process

Step 1: The applicant completes the Eligibility Criteria Form (ECF), and the ADRC or County completes the Supporting Documentation Form (SDF).



Step 2: Once the ECF and SDF have been completed and submitted to RCAW, RCAW will email eligible applicants with a link to the grant application

Step 3: Once RCAW receives the completed HMHM application, RCAW will notify the applicant if the application is approved via email with a link to the Grant Report and mail the awarded \$250 grant funds.

Step 4: The applicant must track expenses on the Grant Report and keep the documentation if RCAW audits their spending.

How-To-Apply Document

STEP-BY-STEP GUIDE: HOW TO APPLY FOR THE HEALTHY MEALS, HEALTHY MINDS GRANT PROGRAM



The [Healthy Meals, Healthy Minds Grant Program for Family Caregivers](#) (HMHM) supports primary caregivers by providing funding to **strengthen services and support** for family caregivers. This allows them to invest in their mental health and wellness and have access to nutritious meal kits.

The HMHM [Overview, Policy, and Procedure Form](#) can be found [here](#).

Step 1: The family/primary caregiver (applicant) completes the [Eligibility Criteria Form](#).

Step 2: The ADRC or County submits the [Supporting Documentation Form for RCAW Grant Programs](#).

Step 3: RCAW receives and reviews the Eligibility Criteria Form & Supporting Documentation Form, and qualified candidates will be emailed a link to the HMHM application.

Step 4: The family/primary caregiver (applicant) completes and submits the application; RCAW will notify them via email if their application is approved with a link to the [Grant Report](#).

Step 5: Approved applicants will receive the grant funds via USPS.

Other:

- Applicants must use the HMHM funds within 60 days of receiving them.
- Applicants must track expenses using the [Grant Report](#).
- Applicants must keep receipts and invoices for services rendered and purchases made with the funds.
- Each quarter, RCAW will select applicants to audit at random.
- If an applicant is chosen for an audit and cannot provide a completed HMHM Grant Report with receipts or invoices, they will immediately be ineligible for future funds and may have to repay RCAW for the SRGP grant funds.

This form is a high-level overview of the SRGP. For more information on the program, visit the [webpage](#).



Group Respite Grant Program



Group Respite Grant Program (GRGP)



The Group Respite Grant Program provides funding so agencies and organizations can hire respite care providers to offer on-site respite care so primary caregivers can partake in activities like support groups, classes, conferences, etc.





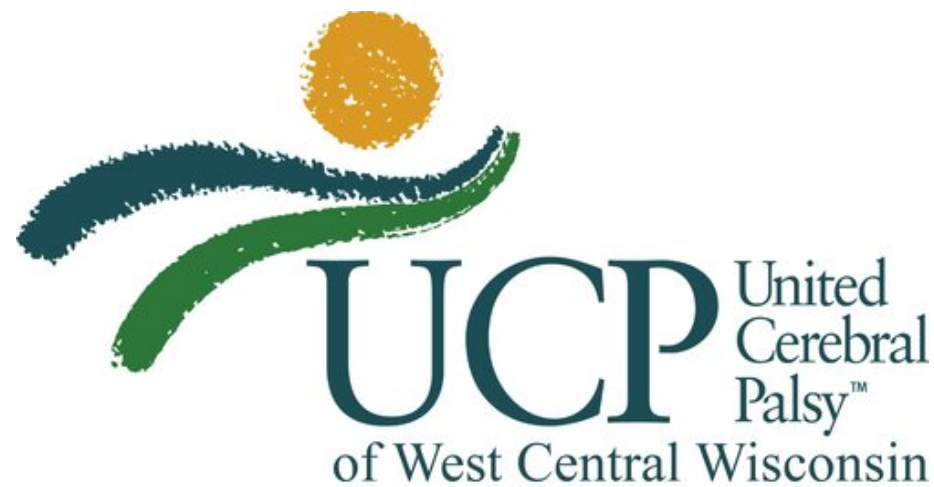
Group Respite Grant Program

The Group Respite Grant Program provides funding to agencies and organizations, enabling them to hire respite care providers and offer on-site respite care, allowing primary caregivers to participate in activities such as support groups, classes, and conferences.



RCAW
Respite Care Association
of Wisconsin

Some past recipients of the GRGP:



This [project/publication/program/website, etc.] is supported by the Administration for Community Living (ACL), U.S. Department of Health and Human Services (HHS) as part of a financial assistance award totaling \$2,042,074 with 75% percentage funded by ACL/HHS and \$689,234 with 25% percentage funded by State of Wisconsin source(s). The contents are those of the author(s) and do not necessarily represent the official views of, nor an endorsement, by ACL/HHS, or the U.S. Government.



Funds for new respite care programs



The **StartUP Respite Grant Program** (StartUP) provides funding for new respite programs or businesses in Wisconsin. Funds can be used for start-up program costs, such as facility, insurance, payroll, accounting, licensing, equipment, supplies, and staff education. Application requests are accepted throughout the year.

Before you apply for the StartUP Respite Grant Program, you must complete RCAW's Bringing Respite to Your Community (BRYC) Workshop.





[Wisconsin Respite Care Registry](#)

[CLICK HERE](#)



REGISTRY

This FREE registry connects those needing respite care with respite care providers. Direct care professionals or providers can sign up to be respite care providers and find meaningful caregiver jobs. Primary caregivers can search this database for in-home or agency-based respite care providers that most closely meet their needs.



Registry, cont.



- There is no cost for respite providers to be listed on the registry; and no cost to family caregivers to search the registry.
- Respite providers on the Registry have complete the Respite Care Provider Training. However, by joining our Registry as a provider does not create an employer /employee relationship, contractor/subcontractor, or any other contract or affiliation of any kind between a provider and RCAW.
- Family caregivers in need of respite care can filter their searches by county, age of care recipient, and type of respite care.
- **RCAW does not check the background, references, or any other aspect of the agencies and individuals listed on the Registry.** If you are using the Registry to search for a provider, you must take responsibility for reviewing the experience, background checks, and qualifications of any respite provider or agency that you may hire, as the providers are self-reporting all information.

Jolene Ostman

[Click to Collapse](#)

Full Name	Jolene Ostman
Email	ostmanjolene@gmail.com
Phone	(715) 790-2462
Address	Barron, WI, 54812-1308
Counties Available to Work In	Barron, Rusk, St. Croix, Washburn
Age(s) Willing to Work With	Children, Adults, Elderly
Hours Available to Work	



Starting in June I will be available during the daytime. I am available some overnights during the week and every other weekend.

Type of Respite in-home, facility-based, camp

Experience / History

I am currently employed in an adult family home and have been there for the last 8 years. My clients are or have all had special needs from Down syndrome, autism, developmental delays to physical disabilities. I specialize in challenging behaviors. I have cared for individuals of all ages.

Education / Certifications /

Licenses

I competed high school then went to school to be a Certified Massage Therapist. I am certified in CPR, medication administering and a mandated reporter. I have also completed the Respite Care Certificate Program.

List any other trainings you have completed I do continuing education every few months that range from nutrition to dementia.

Last Registry Access Date 2021-03-27 13:59:00

Provider Region(s) Western

Added to Registry 2021-03-27 00:00:00



Free Training Courses & Toolkits

- Respite Care Provider Training
- KITs for Caregivers and Providers
- Bringing Respite to Your Community
- NRCPT Replication Toolkit
- Student Respite Toolkit



RCAW
Respite Care Association
of Wisconsin



Free Training Courses

Respite Care



Provider Training





Respite Care Provider Training

Respite Care



Provider Training

The [Respite Care Provider Training \(RCPT\)](#) is a series of free courses designed for individuals interested in providing respite care as a career, part-time job, or volunteer activity to people with varying disabilities and ages. Learners can work at their own pace to complete the ten required online courses, stopping and starting as needed.

When you have finished the RCPT, you'll receive a certificate of completion for seven hours. You will be offered the opportunity to be added to the [Wisconsin Respite Care Registry](#), available to primary caregivers to search for respite care providers in their community.

Also available in Spanish!



RCPT COURSES:

- 101: WHAT IS RESPITE?
- 102: DISABILITY BASICS FOR RESPITE PROVIDERS
- 103: CLIENT CARE FOR RESPITE PROVIDERS
- 104: MEDICATION AWARENESS FOR RESPITE PROVIDERS
- 105: SAFETY PROCEDURES FOR RESPITE PROVIDERS
- 106: CARING FOR CHALLENGING MOMENTS FOR RESPITE PROVIDERS
- 107: WELLNESS, HOUSEHOLD, AND RESPITE ACTIVITIES
- 108: PROFESSIONAL ETHICS AND INTERPERSONAL SKILLS FOR RESPITE PROVIDERS
- 109: MEETING WITH THE CAREGIVER AND CARE RECIPIENT
- 110: NEXT STEPS IN BECOMING A RESPITE PROVIDER



RCAW's KIT for (primary/family) Caregivers offers free online courses, discussion topics, files, and worksheets covering various topics.



[Click here to learn more](#)





Respite 101 for Family Caregivers

An Introduction to Respite in Wisconsin



Respite 101 for Family Caregivers – An Introduction to Respite in Wisconsin:

This course will provide information about the benefits of respite, the settings in which respite can be found, how funding works for respite care in WI, and how to apply it to major funding sources.

This information is available in two ways: Video Webinar or Online Training Module.



How to Hire, Train, and Retain Respite Providers for Family Caregivers



How to Hire, Train, and Retain Respite Workers:

In this course, primary caregivers will receive information and tools to find, hire, and retain a respite provider. Various worksheets and checklists will be given and available for download in the “files” section of your training account.

This information is available in two ways: Video Webinar or Online Training Module.



How to Hire, Train, and Retain Respite Providers for Family Caregivers



[Click Here to Download the
Worksheets](#)

We understand that some caregivers might not have the time or accessibility to take the How to Hire, Train, and Retain Respite Providers course. If so, we have made the worksheets available to download.

How to Hire, Train, and Retain Provider Course Worksheets:

- Hiring & Circles of Care
- Interview Questions
- Interview Situations
- Getting To Know
- Training A Respite Provider



RCAW's **KIT for Respite Providers** offers free online courses, discussion topics, files, and worksheets covering various topics.

Courses in the KIT for Respite Providers:

- Becoming an Independent Respite Provider
- How to Market Yourself as a Respite Provider



[Click Here to Learn More](#)





Becoming an Independent Respite Provider

This course covers what you need to know to be an independent respite provider (not employed by an agency). You will learn about four funding sources and how to become an independent respite provider for each (IRIS, Family Care, CLTS, and Private Pay). We will go in-depth on how to become an approved provider for CLTS as a sole proprietor. The last section of this course will discuss some best practices to consider when starting your own business as a sole proprietor.



Becoming an Independent Respite Provider:

This course covers what providers need to know to be an independent respite provider (not employed by an agency). The course covers four funding sources, how to become an independent respite provider for each (IRIS, Family Care, Private Pay), and how to become an approved provider for CLTS as a sole proprietor. The last section of this course will discuss some best practices to consider when starting a business as a sole proprietor.



How to Market Yourself as a Respite Provider



How to Market Yourself as a Respite Provider:

This course is designed for individuals interested in becoming a respite provider. If you are ready to provide respite care but unsure where to begin, this course is for you!

Both training modules are available in two ways: Video Webinar or Online Training Module.

Bringing Respite To Your Community



This free online workshop, which can be completed at your own pace, will provide the information and building blocks needed to start a respite program in your community. There is assigned reading, outside websites to review, videos to watch, and an ongoing assignment throughout this workshop.

[Click here to learn more](#)



Overview of BRYC Workshop Topics

Bringing Respite to Your Community Workshop



Respite Care Association of Wisconsin

- Workshop 1: Needs Assessment, Program Design, and Business Structure
- Workshop 2: Program Design & Licensing, Funding & Budgeting (Intro)
- Workshop 3: Insurance, Legal Information, Accounting, and Tax Considerations
- Workshop 4: Policies & Procedures, Documentation, Marketing, Activity Design, and Interviews with Existing Respite Programs
- Workshop 5: Staffing & Volunteers, Recruitment & Hiring, Training, and Program Growth
- Workshop 6: Additional Resources, Grant Writing, and Wrap-Up Assignments

Completion of BRYC is required before applying for RCAW's [StartUP Respite Grant Program](#) or the [Co-Op Development Technical Assistance Award](#).



National Respite Care Provider Training Toolkit (NRCPT)

The NRCPT is available to:

- State and local government agencies
- Home care providers
- Respite volunteers
- Community and faith-based organizations

Access: to access the NRCPT Toolkit and implement the training with an opportunity include a state-specific course, please complete the request form here at bit.ly/ReplicationToolkitRequest.

Purpose: is to provide a free, standardized, and competency-based entry-level training for respite care providers, focusing on 10 core competencies to ensure the delivery of high-quality, person-centered, and culturally sensitive care to families and care recipients.

Funding: Provided by the Administration for Community Living.

Development and testing led by:

- ARCH National Respite Network and Resource Center (ARCH)
- National Academy for State Health Policy (NASHP)
- Respite Care Association of Wisconsin (RCAW)



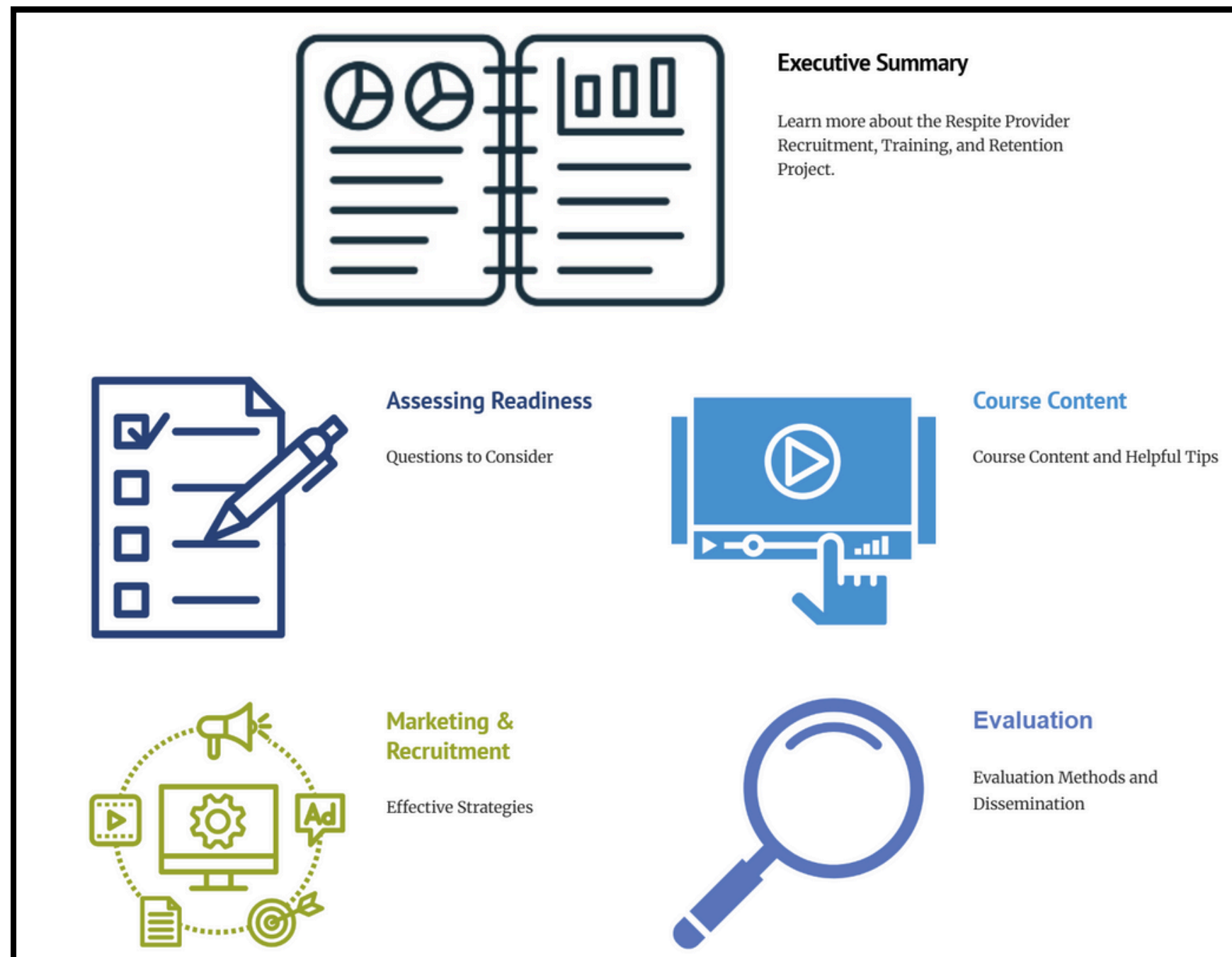
RCAW
Respite Care Association
of Wisconsin

**National
Respite Care**



Provider Training™

National Respite Care Provider Training Toolkit



Options to Implement the NRCPT:

- Use a third party Learning Management Systems (LMS) to host the NRCPT approved training.
- Partner with Respite Care Association of Wisconsin (RCAW) for the use of their LMS for the NRCPT.
- The NRCPT could be offered as live training (either in-person, virtual or as a series of webinars).



Student Respite Toolkit

Key Points

- Free Online Guide
 - Step-by-step instructions for academic programs
 - Helps partner with existing respite providers or create new programs
- Benefits
 - Offers students hands-on, experiential learning
 - Expands respite care options for family caregivers
- Development Process
 - Based on an environmental scan of research and publications
 - Informed by a national survey of student respite programs
 - Includes insights from interviews with program leaders
- Project Partners & Funding
 - Created by the Respite Care Association of Wisconsin with the Whitmore Research Team at Marquette University
 - Funded through a grant from the Administration for Community Living (ACL)

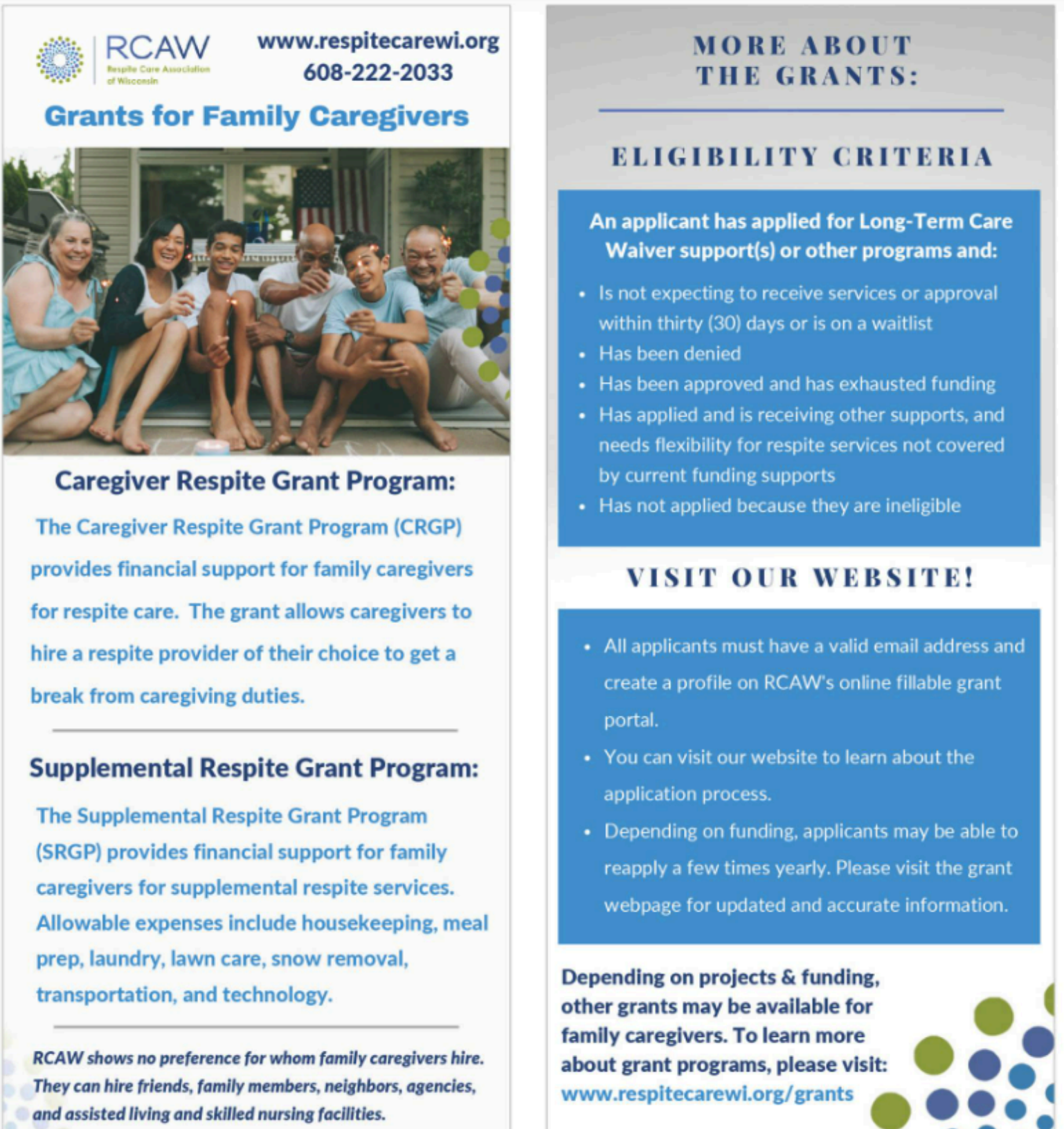


Student Respite Toolkit

The Student Respite Toolkit provides comprehensive, step-by-step guidance to academic programs on the following topics:

- Overview of Existing Programs
- Starting a Program
- Logistics
- Budget and Funding
- Recruitment and Marketing
- Training Students
- Liability
- Program Management and Sustainability
- Evaluation
- Student Respite Collaborative
- Resources
- Annotated Bibliography


Order our Rack Cards at No Cost!



The rack card features the RCAW logo and contact information at the top. Below is a photo of a diverse group of family caregivers sitting together. The card is divided into sections: 'MORE ABOUT THE GRANTS: ELIGIBILITY CRITERIA' with a list of requirements, 'VISIT OUR WEBSITE!' with application details, and descriptions of the 'Caregiver Respite Grant Program' and 'Supplemental Respite Grant Program'. A disclaimer at the bottom states that RCAW shows no preference for whom family caregivers hire.

RCAW Respite Care Association of Wisconsin
www.respitecarewi.org
608-222-2033

Grants for Family Caregivers



Caregiver Respite Grant Program:
The Caregiver Respite Grant Program (CRGP) provides financial support for family caregivers for respite care. The grant allows caregivers to hire a respite provider of their choice to get a break from caregiving duties.

Supplemental Respite Grant Program:
The Supplemental Respite Grant Program (SRGP) provides financial support for family caregivers for supplemental respite services. Allowable expenses include housekeeping, meal prep, laundry, lawn care, snow removal, transportation, and technology.

RCAW shows no preference for whom family caregivers hire. They can hire friends, family members, neighbors, agencies, and assisted living and skilled nursing facilities.

MORE ABOUT THE GRANTS:

ELIGIBILITY CRITERIA

An applicant has applied for Long-Term Care Waiver support(s) or other programs and:

- Is not expecting to receive services or approval within thirty (30) days or is on a waitlist
- Has been denied
- Has been approved and has exhausted funding
- Has applied and is receiving other supports, and needs flexibility for respite services not covered by current funding supports
- Has not applied because they are ineligible

VISIT OUR WEBSITE!

- All applicants must have a valid email address and create a profile on RCAW's online fillable grant portal.
- You can visit our website to learn about the application process.
- Depending on funding, applicants may be able to reapply a few times yearly. Please visit the grant webpage for updated and accurate information.

Depending on projects & funding, other grants may be available for family caregivers. To learn more about grant programs, please visit: www.respitecarewi.org/grants

- About Us
- Free Training Courses
- Respite Connections & Wisconsin Respite Care Registry
- Grants for Family Caregivers

Also available in Spanish!
¡También disponible en español!





Wisconsin Aging
| Advocacy | Network

10:00 am State Policy Updates
Janet Zander



10:15 am Partner Sharing
Julie Strenn, Elevance Health



10:15 am Partner Sharing

1. What are the biggest challenges, as a caregiver, that you face daily?
2. How do you think communities could create solutions to overcome these challenges?
3. How could systems create solutions to overcome these challenges?
4. Are there any specific barriers that you can identify that the system creates that contribute to the challenges you face?



RCAW
Respite Care Association
of Wisconsin

11:15 am Caregiver Stories for Evaluation and Advocacy

Kim Whitmore, Ph.D., RN, CPN, Assistant Professor, Marquette University



RCAW

Respite Care Association
of Wisconsin

12:30 pm Lunch and Networking



RCAW

Respite Care Association
of Wisconsin

1:15 pm Focus on Data

Kim Whitmore, Ph.D., RN, CPN, Assistant Professor, Marquette University



RCAW
Respite Care Association
of Wisconsin

3:00 pm National Family Caregiver Month Activities

Rachel Watkins-Petersen



RCAW

Respite Care Association
of Wisconsin

Coming Soon!

2025 National Family Caregiver Month Toolkit - Wisconsin Edition

www.wisconsincaregiver.org

2025 Weekly Themes

Chosen by caregivers from the 2024 Needs Assessment:

1. **Free Time** – *Prevent burnout*
2. **Paid Respite** – *Find & fund respite*
3. **Social Time** – *Reduce isolation*
4. **People Willing to Help** – *Build a support team*



www.wisconsincaregiver.org

But first! What is the Wisconsin Family Caregiver & Support Alliance (WFACSA)

WFACSA is a grassroots coalition of family caregivers, professionals, advocates, and educators working together to strengthen support for Wisconsin families.

- Respite Care Association of Wisconsin
- WisconSibs
- Milwaukee County Department on Aging
- WI DHS Bureau of Aging and Disability Resources
- UW–Madison Division of Extension
- Acumen Fiscal Agent
- Community Living Alliance
- UW–Madison Kinesiology
- GT Independence
- Greater Wisconsin Agency on Aging Resources



www.wisconsin caregiver.org

Why the Toolkit Matters



- 63 million Americans (1 in 4 adults) provide unpaid care
- 45% increase in caregivers since 2015 - that is a 20 million person increase!
- Nearly 1 in 4 give 40+ hours/week
- \$7,200 average annual out-of-pocket costs



What the Toolkit Is

- Unify messaging across WI's 72 counties & 11 tribes
- Ready-made materials for newsletters, social media, press, and community outreach
- Use in November and year-round

November 3-7	Free Time (micro-breaks & burnout prevention)
November 10-14	Paid Respite (finding & funding respite)
November 17-21	Social Time (reduce isolation, rebuild connections)
November 24-28	People Willing to Help (build a care team)

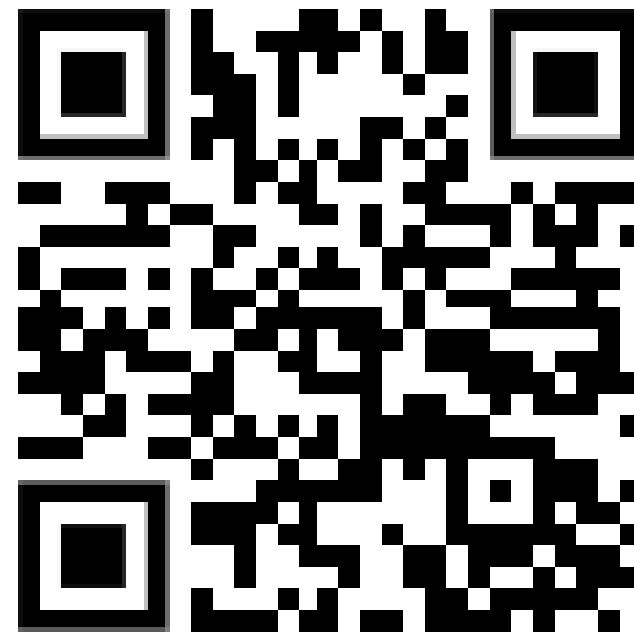


Call to Action



- Download the Toolkit (coming soon!)
- Share across your channels
- Join us in elevating caregivers' voices all year.

We will have a copy of the Governor's Proclamation



3:15 pm Closing Remarks

Lisa Schneider



RCAW

Respite Care Association
of Wisconsin

JOIN US

We Are Forming an Expanding Respite Options Workgroup!

We're not just starting a generic respite workgroup; we're creating a **high-impact, statewide "Expanding Respite Options" workgroup** under the Wisconsin Family and Caregiver Support Alliance (WFACSA) with the added muscle of RCAW's resources and connections.



We Are Forming an Expanding Respite Options Workgroup!

Purpose: To accelerate access to diverse, high-quality respite options for Wisconsin's family caregivers and their loved ones—through collaboration, innovation, and action. We are looking to build **a powerhouse workgroup**. We want decision-makers, doers, drivers, and diversity to make up our workgroup, including:

- **Caregiver voices** (urban, rural, diverse cultural backgrounds)
- **Providers** (nonprofit respite programs, in-home care, adult day services, camps, faith-based)
- **System players** (ADRC directors, Aging Units, DHS reps, county human services)
- **Workforce pipelines** (tech colleges, nursing schools, volunteer corps)
- **Innovators** (co-op developers, app developers, cultural connectors)



We Are Forming an Expanding Respite Options Workgroup!

Promise: Meetings will be energizing and action-oriented, resulting in tangible next steps, valuable connections, and new resources you can utilize today. We also promise to:

- **Keep meetings to 60 minutes:** 15 min updates, 35 min working session, 10 min commitments
- **Rotate facilitation** to keep voices fresh
- **Visual progress tracking** shared via Google Doc or Trello board
- **Quick wins:** Start with something that can be achieved in 60 days, so we feel momentum!

Goals: First meeting – we will set clear 6–12-month goals:

- Tie goals to WFACSA priorities and RCAW resources into the **National Family Caregiver Support Strategy**



THANK YOU!

 608-222-2033

 www.respitecarewi.org

 info@respitecarewi.org



RCAW
Respite Care Association
of Wisconsin